

# MITYLITE®

## ABS Cocktail Table



## SPECIFICATIONS

---

Height: 29" (73.7 cm) - 42" (106.7 cm)

---

Length: 24" (61 cm) - 36" (91.4 cm)

---

Product Type: Table

---

Warranty: 15 years

---

Glide Options: Plastic, Swivel - Swivel

---

Tabletop Thickness: 0.8" (1.9 cm)

---

Distance From Edge To Legs: 3.8" (9.7 cm) -  
14.2" (36.1 cm)

---

Top Material: ABS Plastic

---

Apron Material: ABS Plastic

---

---

Width: 30" (76.2 cm) - 36" (91.4 cm)

---

Weight: 15 lbs (6.8 kg) - 31 lbs (14.1 kg)

---

Minimum Order Quantity: 1

---

Testing Certifications: ANSI/BIFMA-x5.5

---

Table Shape: Round - Square

---

Distance Between Legs: 22.4" (56.9 cm)

---

Number Of People Per Table: 2 - 4

---

Trim Material: Plastic - Plastic/Xtreme

---

## OPTIONS

### TABLE HEIGHTS

29", 30", 30" / 36" / 42" (Adjustable Column), 42"

### TABLE FRAME FINISHES



Black Sand



Chrome

### TABLE LEG STYLES



Knockdown  
Trumpet



Knockdown  
X-Base



Post

### TABLE SIZES

24" Round, 30" Round, 36" Round

#### Other Sizes

30" x 30", 36" x 36"

### TABLETOP COLORS

#### Smooth



Speckled  
Beige



Speckled  
Gray

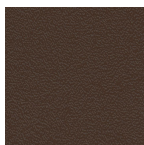
#### Textured



Beige



Black



Brown



Gray

## RECOMMENDED CARTS



CT Cart - Small



CT Cart - X Leg



XpressPort Cocktail  
Cart