

MITYLITE[®]

Ashlar Banquet Chair



SPECIFICATIONS

Height: 37.5" (95.3 cm)

Length: 23.5" (59.7 cm)

Product Type: Chair

Warranty: 12 years

Patents: FormFlex seat

Glide Options: Clear Plastic

Seat Width: 18" (45.7 cm)

Seat Foam Type: Molded

Frame Material: Aluminum

Form Flex Option: Yes

Width: 18" (45.7 cm)

Weight: 17 lbs (7.6 kg)

Minimum Order Quantity: 25

Country of Origin: China

Testing Certifications: Cal Bulletin 117
Compliant

Seat Length: 19" (48.3 cm)

Seat Height: 18" (45.7 cm)

Seat Foam Thickness: 2" (5.1 cm)

Frame Tube Size: Tapered

Back Pitch: 98 degrees (dining pitch)

OPTIONS

CHAIR BACK STYLES



Shield

CHAIR FINISHES

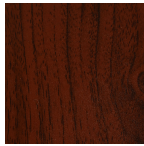
Faux Wood



Charcoal



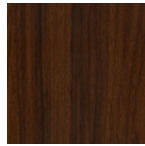
Chocolate



Mahogany



Natural



Walnut

Grade 1



Black Sand



Dark Gold Sand



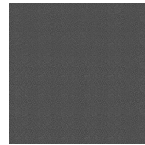
Gold Vein



Java



Silver Sand



Silver Vein



Urban Bronze Sand

Grade 2



Cocoa



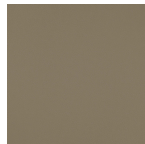
Gloss Black



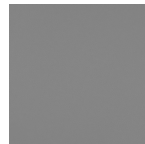
Gunmetal



Pewter Sand



Satin Nickel

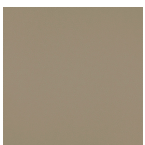


Silver AR



Tungsten Sand

Grade 3



Champagne

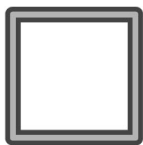


Vintage Gold

FABRIC OPTIONS

- Visit our [Fabric Center](#) to see over 2,000+ fabrics!

FRAME PROFILE



Smooth

STACKING & STORAGE

Stacking Type: Stacking

Stacking: 6 chairs

Stack Density: 4.25" (10.7 cm)

Stack Height: 58.75" (149.2 cm)

Stack Depth (Creep): 34" (86.3 cm)

RECOMMENDED CARTS



XpressPort
XpressLink Cart



Comfort Seating RS
Cart