

MITYLITE[®]

Elite Banquet Chair



SPECIFICATIONS

Height: 36.3" (92.2 cm) - 37" (94 cm)

Length: 24" (61 cm)

Product Type: Chair

Warranty: 12 years

Patents: Flex-back, FormFlex seat - FormFlex seat

Weight Capacity: 1,000 lbs (453.6 kg)

Seat Length: 15.5" (39.4 cm)

Seat Height: 18.8" (47.8 cm)

Seat Foam Thickness: 2.5" (6.4 cm)

Frame Material: Aluminum

Frame Metal Thickness: .1" (.3 cm)

Width w/ Ganging: 18.5" (47 cm) - 19.3" (49 cm)

Depth w/ Flex-back: 22" (55.9 cm)

Width: 18.5" (47 cm)

Weight: 12 lbs (5.4 kg) - 17 lbs (7.9 kg)

Minimum Order Quantity: 1 - 25

Country of Origin: China - US

Testing Certifications: Cal Bulletin 117
Compliant - Cal Bulletin 117 Compliant, ANSI /
BIFMA X5.1 - 2011

Glide Options: Nickel-Plated

Seat Width: 15.5" (39.4 cm) - 15.8" (40.1 cm)

Seat Foam Type: Cut Foam - Molded MDI

Back Foam Thickness: .8" (1.9 cm) on the front
of the back, .3" (.6 cm) on the back of the back

Frame Tube Size: 1" (2.5 cm)

Ganging Option: Retractable

Form Flex Option: Yes

Back Pitch: 104 degrees (event pitch) - 104
degrees (event pitch) or 98 degrees (dining
pitch) with Flex-back

Stacking Type: Stacking

Stack Density: 4.8" (12.2 cm)

Stack Depth: 30.3" (77 cm)

Stacking Buttons: 8 Buttons

Stacking Number of Chair: 10 Chairs

Stack Height: 83" (210.8 cm)

Stack Bar Options: 0.6" (1.5 cm)

Sway Bars: 0.5" (1.3 cm)

CUSTOM FABRIC REQUIREMENTS

Seat Style	Seat Total	Inside Back	Outside Back	Back Total	Total Yards
Waterfall (Fabric)	0.32 yards	0.18 yards	0.18 yards	0.36 yards	0.68 yards
Waterfall (Vinyl)	0.32 yards	0.18 yards	0.18 yards	0.36 yards	0.68 yards
Box (Fabric)	0.34 yards	0.18 yards	0.18 yards	0.36 yards	0.70 yards
Box (Vinyl)	0.32 yards	0.18 yards	0.18 yards	0.36 yards	0.68 yards

OPTIONS

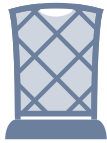
CHAIR BACK STYLES



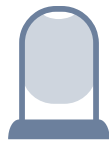
Crown



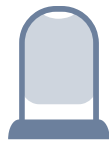
Hourglass



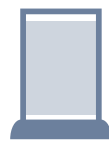
Lattice



Oval



Round



Square
Open

CHAIR FINISHES

Grade 1



Black Sand



Dark Gold
Sand



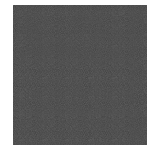
Gold Vein



Java



Silver Sand



Silver Vein

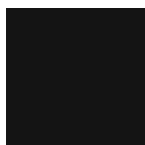


Urban
Bronze
Sand

Grade 2



Cocoa



Gloss Black



Gunmetal



Pewter
Sand



Satin Nickel



Silver AR



Tungsten
Sand

Grade 3



Champagne



Vintage Gold

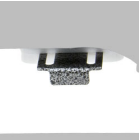
FABRIC OPTIONS

- Visit our [Fabric Center](#) to see over 2,000+ fabrics!

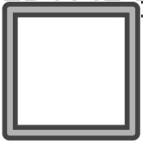
ADD-ONS



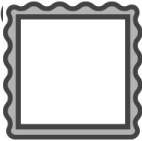
Flex-back (excludes Lattice back)
Reclines slightly for individual comfort



Retractable Ganging
Interlocks chairs into rows; folds flat when not in use



Smooth



Fluted

STACKING & STORAGE

Stacking Type: Stacking

Stacking: 10 chairs

Stack Density: 4.8" (12.1 cm)

Stack Height: 83" (210.8 cm)

Stack Depth (Creep): 30.25" (76.8 cm)

Stack Bars: 0.625" (1.5 cm)

Stacking Buttons: 8 buttons

Sway Bars: 0.5" (1.27 cm)

RECOMMENDED CARTS



4-Wheel Comfort Seating Cart



5-Wheel Comfort Seating Cart



XpressPort XpressLink Cart



Comfort Seating Pan Cart



High-Capacity Stacking Cart



High-Capacity Push Cart