

MITYLITE[®]

Encore Banquet Chair



SPECIFICATIONS

Height: 35" (88.9 cm) - 35.5" (90.2 cm)

Length: 23" (58.4 cm)

Product Type: Chair

Warranty: 12 Years - 12 years

Patents: Flex-back, FormFlex seat

Weight Capacity: 1,000 lbs (453.6 kg)

Seat Length: 17" (43.2 cm)

Seat Height: 18.5" (47 cm)

Seat Foam Thickness: 2.5" (6.4 cm)

Frame Material: Aluminum

Ganging Option: Wire or Retractable

Form Flex Option: Yes

Back Pitch: 104 degrees (event pitch) or 98 degrees (dining pitch) with Flex-back

Stacking Number of Chair: 10 chairs

Stack Height: 80.3" (203.8 cm)

Width: 19.8" (50.2 cm) - 20" (50.8 cm)

Weight: 14 lbs (6.4 kg)

Minimum Order Quantity: 1

Country of Origin: US

Testing Certifications: ANSI / BIFMA X5.1 - 2011

Glide Options: Nickel-Plated, Plastic

Seat Width: 17.5" (44.5 cm)

Seat Foam Type: Molded MDI

Back Foam Thickness: 0.8" (1.9 cm)

Frame Tube Size: 1" (2.5 cm)

Width w/ Ganging: 21.8" (55.2 cm)

Depth w/ Flex-back: 22.5" (57.2 cm)

Stacking Type: Stacking

Stack Density: 4.8" (12.2 cm)

Stack Depth: 29.8" (75.6 cm)

Stack Bar Options: Optional

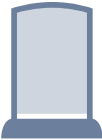
Stacking Buttons: 4 buttons w/out stack bar
and 8 buttons w/stack bar

CUSTOM FABRIC REQUIREMENTS

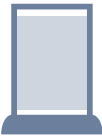
Seat Style	Seat Total	Inside Back	Outside Back	Back Total	Total Yards
Waterfall (Fabric)	0.42 yards	0.32 yards	0.32 yards	0.64 yards	1.06 yards
Waterfall (Vinyl)	0.42 yards	0.32 yards	0.32 yards	0.64 yards	1.06 yards

OPTIONS

CHAIR BACK STYLES



Arch



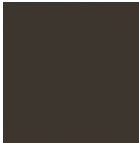
Square
Open

CHAIR FINISHES

Grade 1



Black Sand



Dark Gold
Sand



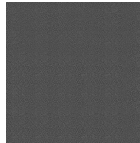
Gold Vein



Java



Silver Sand

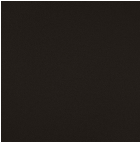


Silver Vein

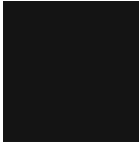


Urban
Bronze
Sand

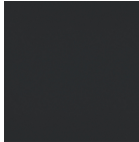
Grade 2



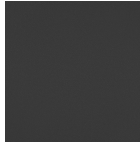
Cocoa



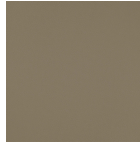
Gloss Black



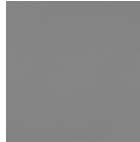
Gunmetal



Pewter
Sand



Satin Nickel



Silver AR



Tungsten
Sand

Grade 3



Champagne



Vintage Gold

FABRIC OPTIONS

- Visit our [Fabric Center](#) to see over 2,000+ fabrics!

ADD-ONS



Flex-back
Reclines slightly for individual comfort

Wire Ganging
Interlocks chairs easily



Retractable Ganging
Interlocks chairs into rows; folds flat when not in use

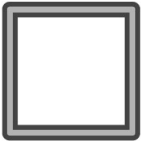


Stack Bar
Protects cushions and increases frame strength



Mitered Leg
Stylish angled leg adds elegance

FRAME PROFILE



Smooth

STACKING & STORAGE

Stacking Type: Stacking

Stacking: 10 chairs

Stack Density: 4.8" (12.1 cm)

Stack Height: 80.25" (203.8 cm)

Stack Depth (Creep): 29.75" (75.5 cm)

Stack Bars: Optional

Stacking Buttons: 4 buttons w/out stack bar and 8 buttons w/stack bar

RECOMMENDED CARTS



4-Wheel Comfort Seating Cart



5-Wheel Comfort Seating Cart



XpressPort XpressLink Cart



Comfort Seating Pan Cart



High-Capacity Stacking Cart



High-Capacity Push Cart