

MITYLITE[®]

Reveal Linenless Buffet Table



SPECIFICATIONS

Height: 29" (73.7 cm)

Length: 60" (152.4 cm) - 96" (243.8 cm)

Minimum Order Quantity: 1

Testing Certifications: ANSI/BIFMA-x5.5

Glide Options: Casters - Plastic, Swivel

Tabletop Thickness: 1.8" (4.6 cm)

Distance From Edge To Legs: 1.8" (4.6 cm) -
17.7" (45 cm)

Top Material: High Pressure Laminate

Apron Material: Aluminum

Width: 30" (76.2 cm)

Product Type: Table

Warranty: 1 Year Tabletop, 15 year limited - 15
years

Weight Capacity: 2,000 lbs (907.2 kg)

Table Shape: Rectangle - Serpentine

Distance Between Legs: 56.4" (143.3 cm) -
61.5" (156.2 cm)

Number Of People Per Table: 6 - 10

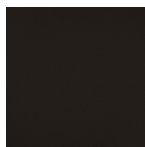
Trim Material: Impact-resistant polymer

OPTIONS

TABLE FRAME FINISHES



Black Sand



Cocoa



Pewter
Sand



Silver Sand



Tungsten
Sand



Urban
Bronze
Sand

TABLE SHAPES

Rectangle, Serpentine

TABLE SIZES

Best Sellers

30" x 72"

Other Sizes

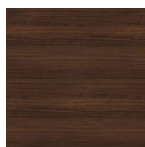
30" x 60", 30" x 96"

TABLETOP COLORS

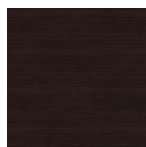
Standard



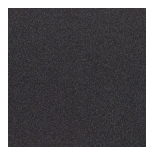
Beigewood



Colombian
Walnut



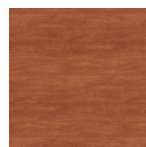
Ebony
Recon



Graphite
Nebula



Studio Teak



Wild Cherry

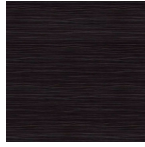
Reveal Linenless Buffet Table

MITYLITE

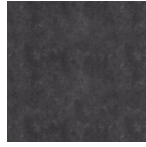
Upgrade



5th Ave Elm



Madagascar



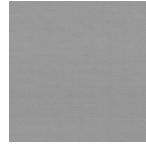
Oiled
Soapstone



Palisades
Oak



Park Elm



Satin
Stainless



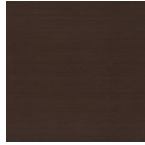
Skyline
Walnut



Weathered
Char



White
Carrara



Xanadu

ADD-ONS

Top Tier

Adds extra serving and display space

Casters

Add wheels for easy maneuverability



Wire Management

Tidies cords and prevents trip hazards

Skirting Clips

Attaches skirting to tables, linens not included, ask your sales reps for details.



Ganging

Connects tables with a pinch-free, sliding closure on the underside of the table

RECOMMENDED CARTS



RT Reveal Cart - Edge