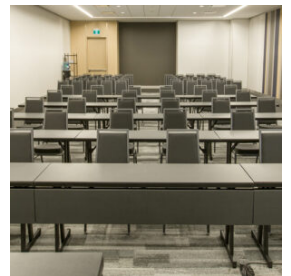


MITYLITE[®]

Reveal Linenless Duo Table



SPECIFICATIONS

Width: 30" (76.2 cm) - 36" (91.4 cm)

Weight: 55 lbs (24.9 kg) - 83 lbs (37.4 kg)

Minimum Order Quantity: 1

Testing Certifications: ANSI/BIFMA-x5.5

Glide Options: Non-Marring Plastic

Tabletop Thickness: 1.8" (4.6 cm)

Distance From Edge To Legs: 1.3" (3.3 cm) - 16.7" (42.4 cm)

Top Material: High Pressure Laminate

Apron Material: Aluminum

Length: 60" (152.4 cm) - 96" (243.8 cm)

Product Type: Table

Warranty: 1 Year Tabletop, 15 year limited

Weight Capacity: 2,000 lbs (907.2 kg)

Table Shape: Rectangle

Distance Between Legs: 54.8" (139.1 cm) - 62.7" (159.3 cm)

Number Of People Per Table: 2-6 - 4-10

Trim Material: Impact-resistant polymer

Folded Thickness: 3.3" (8.3 cm)

OPTIONS

TABLE FRAME FINISHES



Black Sand



Cocoa



Pewter Sand



Silver Sand



Tungsten Sand



Urban Bronze Sand

TABLE SIZES

18"-30" x 60", 18"-30" x 72", 18"-30" x 96", 24"-36" x 72", 24"-36" x 96"

TABLETOP COLORS

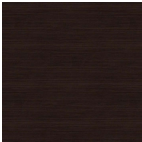
Standard



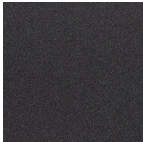
Beigewood



Colombian Walnut



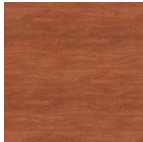
Ebony Recon



Graphite Nebula



Studio Teak



Wild Cherry

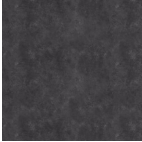
Upgrade



5th Ave Elm



Madagascar



Oiled Soapstone



Palisades Oak



Park Elm



Satin Stainless



Skyline Walnut



Weathered Char



White Carrara



Xanadu

ADD-ONS



Intergrated Power
Built-in 2 standard outlets and 2 USB



Wire Management
Tidies cords and prevents trip hazards

Skirting Clips

Attaches skirting to tables, linens not included, ask your sales reps for details.

RECOMMENDED CARTS



RT Reveal Cart - Edge



RT Reveal High Capacity Cart



XpressPort Linenless Slant Stack Cart



XpressPort Space Saver Cart



XpressPort Slant Stack Cart