

MITYLITE[®]

Reveal MAX Linenless Round Table



SPECIFICATIONS

Height: 29" (73.7 cm) - 30" (76.2 cm)

Weight: 51 lbs (23.1 kg)

Minimum Order Quantity: 1

Testing Certifications: ANSI/BIFMA X5.5-2014

Glide Options: Non-Marring Plastic

Tabletop Thickness: 1.5" (3.8 cm)

Distance From Edge To Legs: 11.5" (29.2 cm)

Top Material: Compact Laminate

Apron Material: Aluminum

Length: 60" (152.4 cm)

Product Type: Table

Warranty: 1 Year Tabletop, 10 year limited

Weight Capacity: 2,000 lbs (907.2 kg)

Table Shape: Round

Distance Between Legs: 33.6" (85.3 cm)

Number Of People Per Table: 6-8

Trim Material: Resin

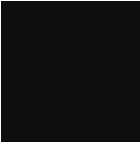
Folded Thickness: 2.7" (6.9 cm)

OPTIONS

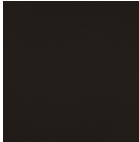
TABLE HEIGHTS

29", 30"

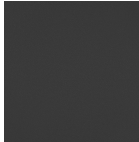
TABLE FRAME FINISHES



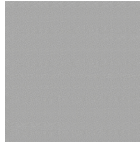
Black Sand



Cocoa



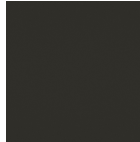
Pewter Sand



Silver Sand



Tungsten Sand



Urban Bronze Sand

TABLE SIZES

60" Round

TABLETOP COLORS

Standard



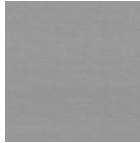
Beigewood



Colombian Walnut



Graphite Nebula



Satin Stainless



Skyline Walnut



Studio Teak



White Barn

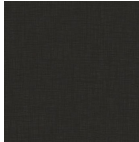
Upgrade



5th Ave Elm



Antique Marula Pine



Blackbird



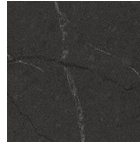
Ebony Char



Magnolia



Mushroom



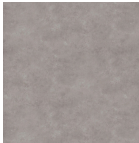
Nova Serrana



Oiled Soapstone



Park Elm



Pearl Soapstone



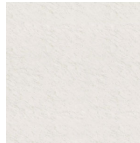
Portico Teak



Veranda Teak



Weathered Char



White Carrara

RECOMMENDED CARTS



CT Cart - Edge



XpressPort Round
Table Cart